



CONDUCTIVE WEAR

SUPERIOR COMFORT & PERFORMANCE

For Barehand Work on Transmission Systems



NEW



CARRARO TECNO

STYLE, TECHNOLOGY, INNOVATION
PROUDLY MADE IN ITALY

One-Piece Conductive Wear

5
Snap Buttons on gloves and socks ensure secure connection and bonding.



ALL MEET IEC 60895 STANDARD



1
Bonding Devices screw-on connection. One conveniently located on each side of the suit torso.



3
Stretch-Top Socks are comfortable yet extremely durable. Snap Buttons ensure proper bonding with the trousers.



2
Exclusive "Grip Patches" are made of genuine split-grain leather. They provide a sure grip and eliminate the need for a second pair of gloves.*

CAUTION

*DO NOT wear a second pair of gloves such as leather protectors over the Carraro conductive gloves.



4
Spacious Pockets on left shoulder and right leg with Velcro® closure.

Two-Piece Conductive Wear



NEW

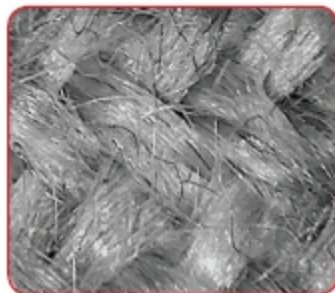
PATENT PENDING

The Face Screen FA15 is an optional removable face shield whose use is recommended for over 500 kV live line work. Its use is however compulsory for barehand work above 800 kV and up to 1000 kV and it has to be worn in order to comply with the requirements of Class 2 Category Conductive Clothing (as required by new edition of IEC 60895). The screen is completely made of silver fibers and its patented design ensures extremely good visibility and breathability.

ESTABLISHED METHODS EVOLVE

The concept of "**barehand**" maintenance on energized transmission lines dates back to the 1960's when workers began working on energized transmission lines without hotsticks while being supported by insulated devices.

Today lineworkers energize themselves at the full potential of transmission lines while wearing a **Conductive Suit & Boots** and being supported by an insulating device such as a bucket truck, insulated platform, from helicopters, or directly on the conductor.



Microscopic view of a typical suit using stainless steel fibers (black strands) in a woven fabric.



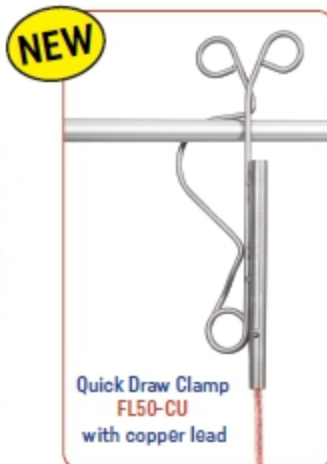
Microscopic view of Carraro Conductive Suit with helically wound silver yarn (shiny silver) in comfortable knit fabric.

QUICK DRAW CLAMP™

Quick Draw Clamp™ is a new patent-pending metal bonding clamp from Carraro Tecno that is designed for quick engagement and disengagement with a live line. The jaws of the clamp allow the user to engage the clamp with one push on to the line and with one pull the clamp releases itself from the line.

Quick Draw Clamp is available in various models and connection options.

PATENT PENDING



SUPERIOR COMFORT & PERFORMANCE

The **Carraro Tecno Conductive Wear** design modernizes the decades old concept of shielding a worker at transmission level voltages. The superior comfort, best electrical performance and excellent durability result from using highly flexible ultra-fine **silver fibers**, the best electrically conducting element on earth, woven into a very soft, comfortable, & breathable fabric that is highly durable and tear resistant.



Carraro Tecno's Innovative Fabric is Very Soft, Comfortable, Breathable and yet it is highly durable and tear resistant. All aimed to provide Superior Comfort and Performance

MEET IEC 60895 — All of Carraro Tecno Conductive Wear (suits & footwear) meet the IEC 60895 Standard requirements. Reports are available upon request.

**BOOTS ALSO MEET
UNI EN ISO 20345 STD**



Comfortable Fine Leather Lineman Conductive Boots with Snap-On Removable Braided Copper Leads & Calf Straps. Boots have steel toes for safety and sole shanks for comfort while wearing them for long periods of time.

Meet IEC 60895 &
UNI EN ISO 20345 Standards

SIZE & MEASUREMENTS



Size	S	M	L	XL	2XL	3XL
Height in (cm)	64 - 67 (164-170)	67 - 69 (170-176)	69 - 72 (176-182)	72 - 74 (182-188)	72 - 75 (184-190)	75 - 78 (192-198)
Chest in (cm)	33 - 36 (84-92)	36 - 39 (92-100)	39 - 42 (100-108)	42 - 46 (108-116)	46 - 49 (116-124)	49 - 52 (124-132)
Waist in (cm)	30 - 33 (76-84)	33 - 36 (84-92)	36 - 39 (92-100)	39 - 42 (100-108)	42 - 46 (108-116)	46 - 49 (116-124)
Gloves	Large			X Large		
Socks, Men's Shoe Size	7	8 - 9	9.5 - 11	11.5 - 13	14 - 15	16



Cat No. FA48	*Shoe Size US	8	8.5	9	9.5	10	10.5	11	11.5	12	13
	*Shoe Size EU	41	41	42	42	43	43	44	44	45	46
	*Shoe Size UK	7.5	8	8.5	9	9.5	10	10.5	11	11.5	12.5

*Sizes smaller and larger than what is on the table are available for additional nominal charge.

It is recommended that the user wear an ordinary pair of socks under the conductive socks. So a bump to the next shoe size may be desired.

SELECTION CHARTS



Suit Cat No.	Sizes	Description	Style	Bonding Device
FA32-SIZE	S, M, L, XL, 2XL, 3XL	Conductive Suit, Jacket and Trousers	2-Piece	Specify

Suit Cat No.	Sizes	Description	Style	Bonding Device
FE45-SIZE	S, M, L, XL, 2XL, 3XL	Conductive Suit, Flight Suit Style	1-Piece	Specify



Each conductive suit comes in its own carrying and storage case which can fit one suit, a pair of socks, a pair of gloves and some of the bonding devices. Cases are made of heavy-duty tear-resistant nylon fabric.



Cat No.	Description - Pair	Size
FE46-L	Conductive Gloves	Fits S, M & L Glove Sizes
FE46-XL	Conductive Gloves	Fits XL & Up Glove Sizes

Sock Size	S	M	L	XL	2XL	3XL
Fits Men's Shoe Size	7	8 - 9	9.5 - 11	11.5 - 13	14 - 15	16
Sock Cat No. / Pair	FE47-S	FE47-M	FE47-L	FE47-XL	FE47-2XL	FE47-3XL



Cat No.	Description	Size
FA15	Face Screen Mask	One Size Fits All



NEW

QUICK DRAW CLAMP™

NEW



FA47



FE99

Cat No.	Bonding Device Description
FL50-CU	Quick Draw Metal Bonding Clamp with Copper Lead
FL50-CUIN	Quick Draw Metal Bonding Clamp with Copper Lead & Insulating Rod
FL50-BS	Quick Draw Metal Bonding Clamp to be used with Bonding Strap (not included)
FA47	Standard Metal Bonding Clamp with Copper Lead
FE99	Pair of Elastic Bonding Straps



NEW

FL50-CUIN



FL50-CU



FL50-BS

CAUTION

It is the responsibility of the utility company or service company to select and mandate the use of proper clothing, equipment, instructions and training for the live-line work to be performed.